



kurtaran

FOAM CHAMBERS

- FOR FIXED ROOF STORAGE TANKS -

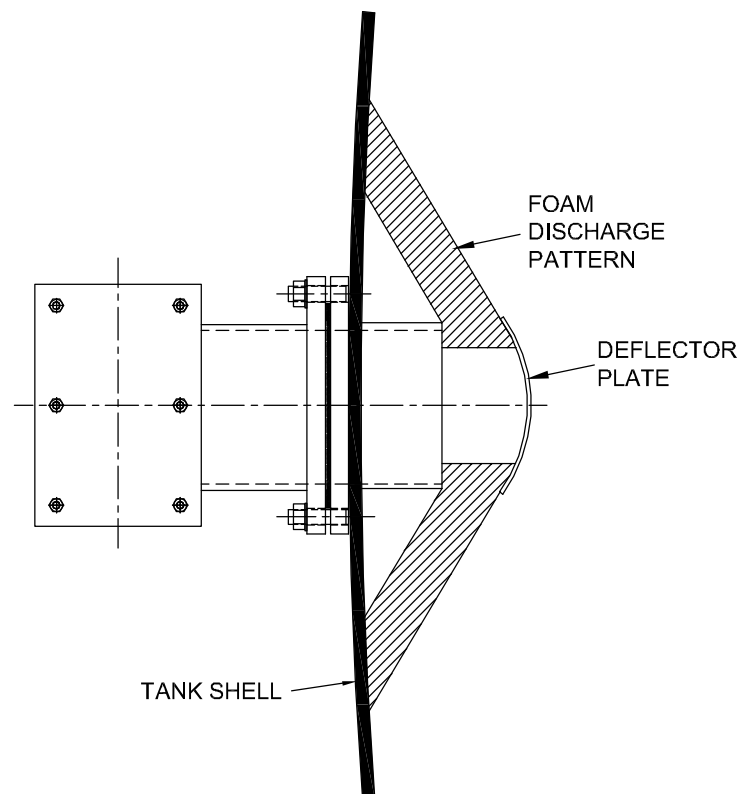
KURTARAN Foam Chambers are designed to expand and deliver foam directly on the surface of flammable or combustible liquids that are stored on the fixed roof storage tanks capable of foam generation and vapour seal ability.

KURTARAN Foam Chambers have three body sizes with discharge capacities of from 100 to 2,600 liters/min at inlet pressures between 3 and 10 bar g. Foam Chambers are sized with an orifice plate to deliver the required flow rate at a specific inlet pressure, thus allowing the most efficient use of resources such as foam and water.

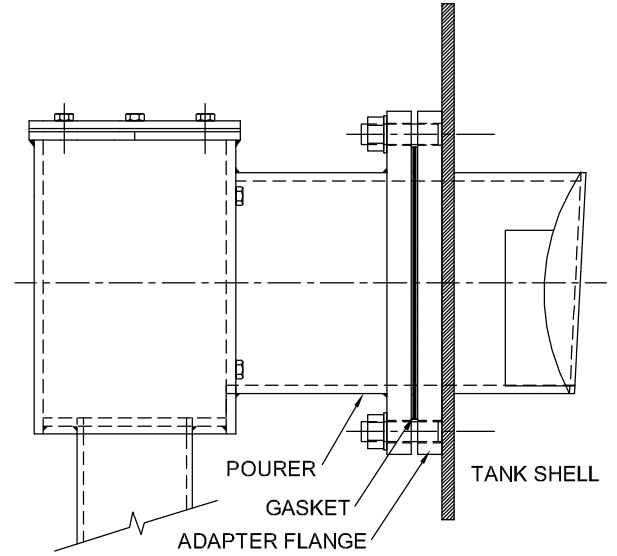
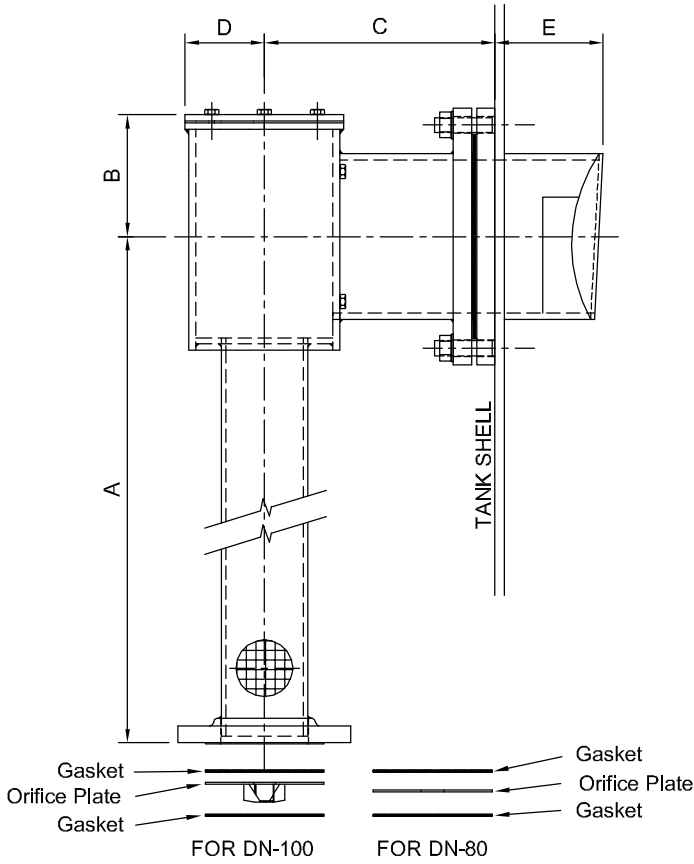
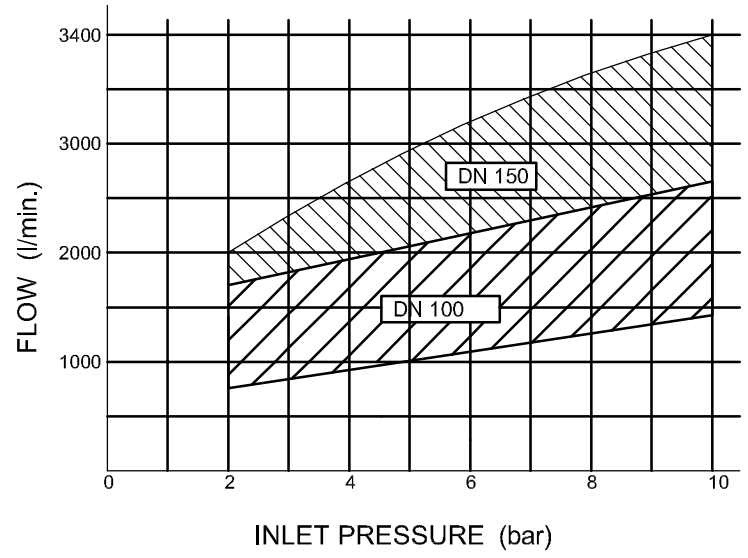
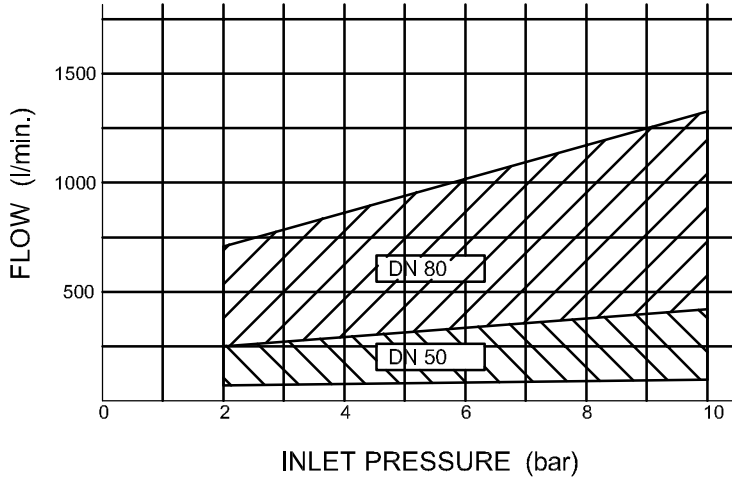
The aerated foam solution expands at the chamber body and then passes through the tank shell. The finished foam dispersed by deflector plate against the tank wall. The deflector directs the foam down to tank wall and onto the fuel surface with reduced velocity to minimize fuel contamination which is an important aspect especially when in use with alcohol.

By removing the top cover of the unit, inspection, maintenance and the replacement of the frangible glass disc can be easily done. Also the testing of the system without discharging foam onto the fuel can be easily made with the help of this cover removal, if it is operated without the top cover.

With a suitable foam concentrate, the typical expansion of foam will be between 5:1 and 7:1. %25 drainage time will be dependant on the foam concentrate used, but an approximate of 3 - 8 minutes should be expected with pressures between 3 and 10 bars.



PERFORMANCE CURVES



A special fixing kit is available to simplify installation. This enables the Foam Chamber to be fitted safely from outside the tank.

All necessary parts including nuts, washers and gaskets are supplied.

DIMENSIONS

	DN-50	DN-80	DN-100	DN-150
Dimensions A (mm.)	795	885	1135	1390
B (mm.)	119	169	169	219
C (mm.)	225	225	300	335
D (mm.)	105	110	110	180
E (mm.)	77	125	145	145
Inlet Connection	2" RF Flange ANSI #150	3" RF Flange ANSI #150	4" RF Flange ANSI #150	6" RF Flange ANSI #150
Outlet Connection	4" RF Flange DIN-PN10	6" RF Flange DIN-PN10	8" RF Flange DIN-PN10	10" RF Flange DIN-PN10
Materials	Carbon Steel			
Orifice	Stainless Steel 304			
Internals	Stainless Steel 304			
Frangible Disc	Glass			
Screw, nuts, washers	Cadmium Plated			
Finish:	Phosphate Plated and Electrostatically Painted to RAL3000 Polyester Powder Paint			
Approximate Weight	35 kg.	55 kg.	80 kg.	120 kg.

The right is reserved to vary or modify any specification without prior notice.



DOĞAN YANGIN
SÖNDÜRME SAN. ve TİC. A.Ş.

Perşembepazarı Cad. No:13/C Karaköy - İSTANBUL
Tel: 0212.249 4922 Fax: 0212.245 3287
e-mail: info@dys.com.tr